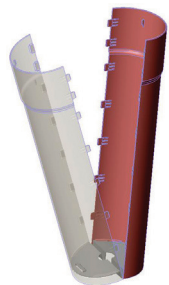




## Base Unit Assembly

Regular



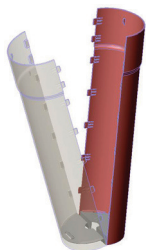
1. Insert base disc into each half with flush (smooth) side facing upwards.
2. Clip two halves together

Large



1. Insert large base disc into each half.
2. Clip two halves together

Small



1. Clip two halves together
2. Push base disc into place, once halves assembled



# TerraCyclic™ Installation Instruction Sheet

## Step One



Screw or double sided tape bottom (A) bracket to wall approx. 100mm or 4" from floor. (See overleaf for bracket instructions)

## Step Two



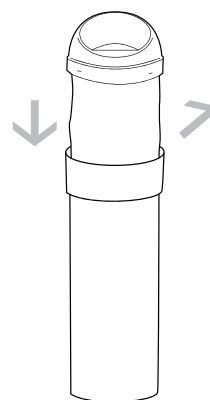
Fit base into bottom bracket and screw top of unit (marked X) to wall using wall plugs as required, or optional bracket, for fixing see overleaf.

## Step Three



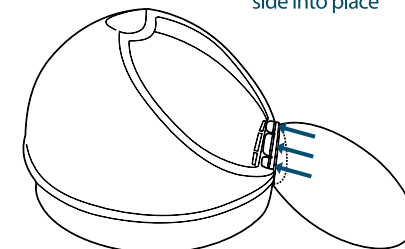
Insert cartridge into top of base with opening facing forward

## Step Five



Replace full or used cartridge, weekly, two weekly, maximum monthly.

## Step Four



Install flap into cartridge clip under one side then clip other side into place



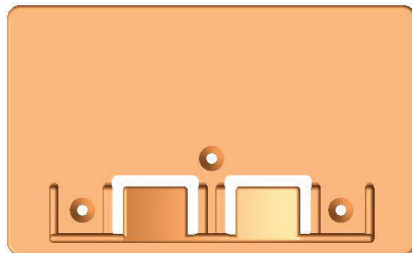
# Wall Mounting Options

- OPTION ONE: Directly screw into wall  
OPTION TWO: Double sided tape to wall

## FIXINGS NOT SUPPLIED

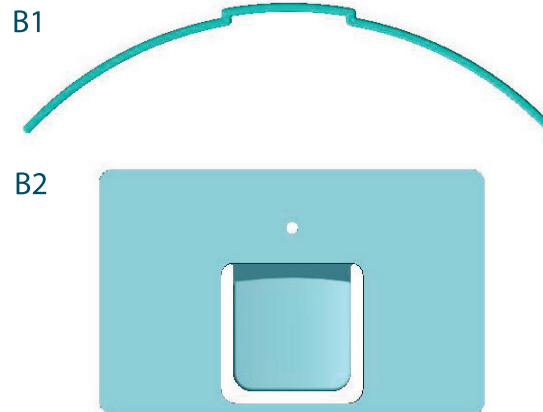
- 4x self tapping screws
- 4x wall plugs
- Double sided foam tape (optional if required)

### A. Compulsory Bottom Bracket



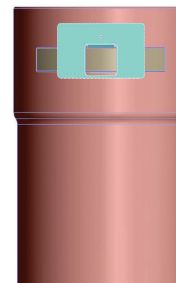
Screw or double sided foam tape to wall  
- approx. 100mm or 4" from floor.

### B. Optional Top Brackets



N.B. Only required when screw fixing in step two is not desirable.

Double side tape B1 to top of base. Fit B2 into B1, double side foam tape back to B2 and fix against wall.



TerraCyclic™

INSTALLATION  
INSTRUCTIONS

